

CHS PROPERTIES, MUPD

5531-002

176

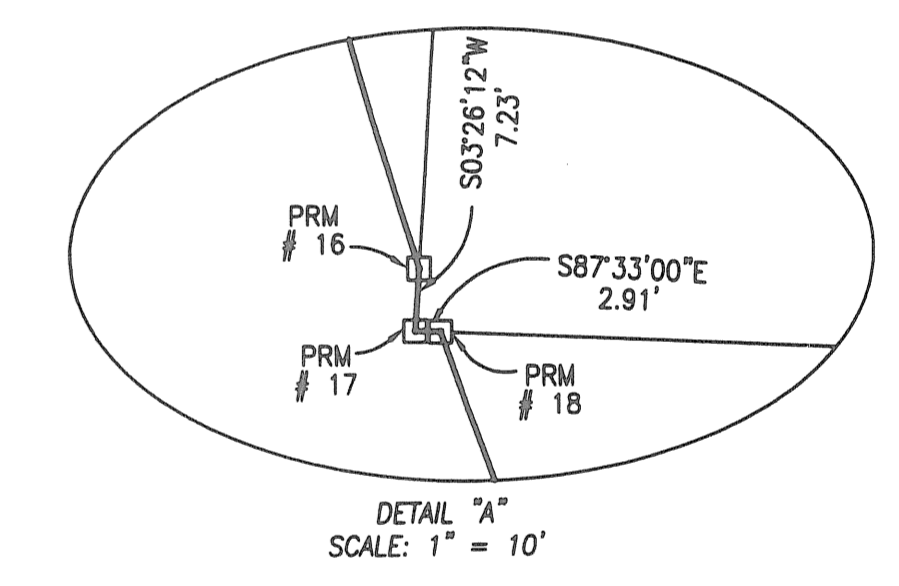
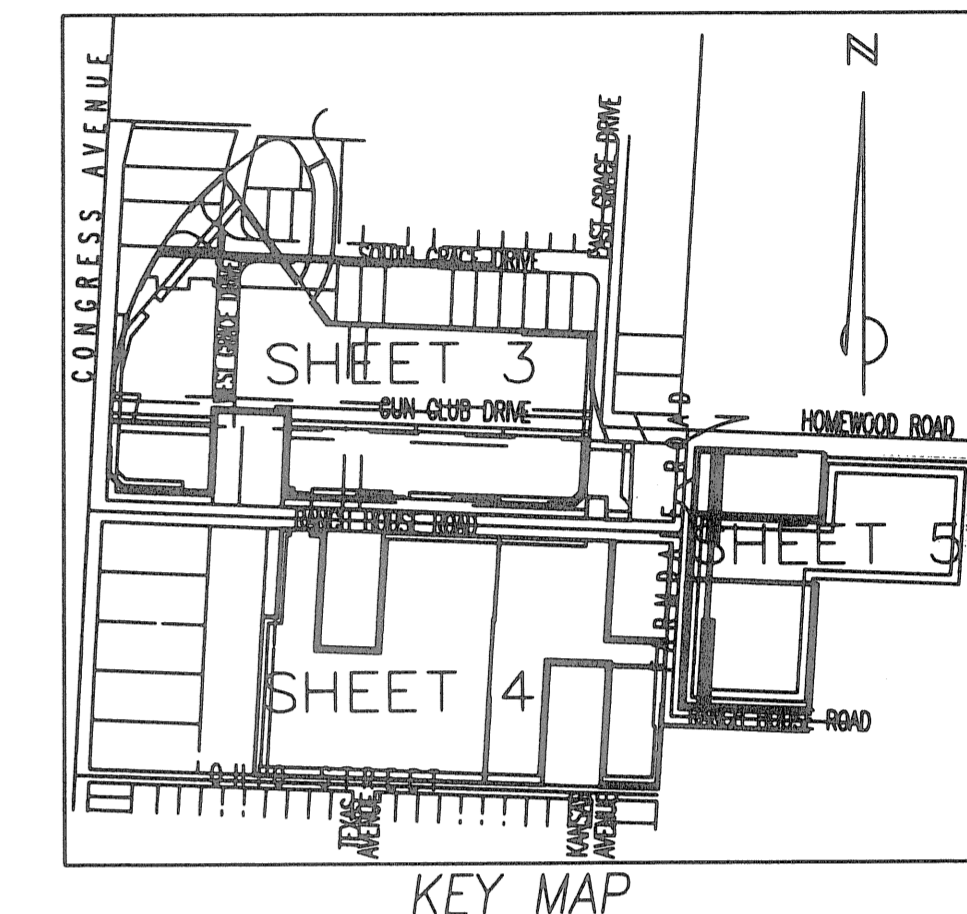
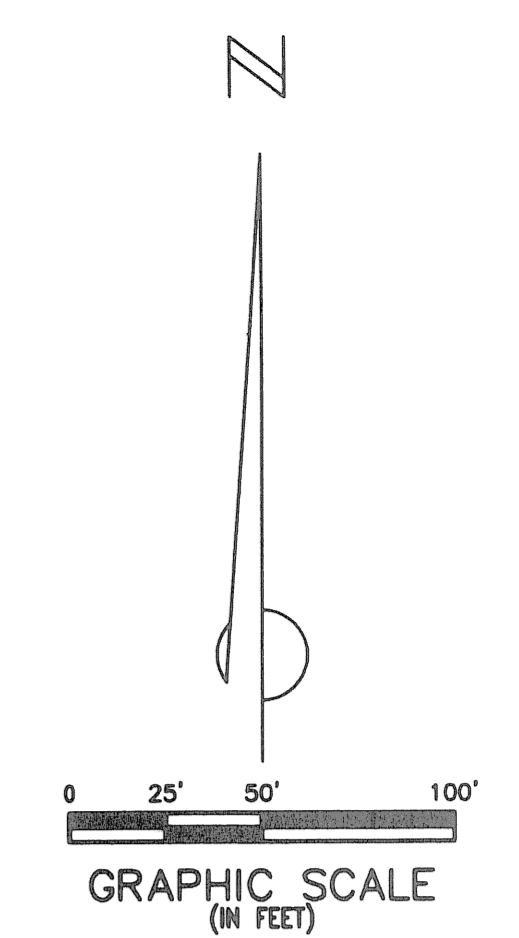
BEING A REPLAT OF A PORTION OF MORRISON HOMES, AS RECORDED IN PLAT BOOK 23, PAGES 189 AND 190 AND A REPLAT OF A PORTION OF MORRISON SUBURBAN DEVELOPMENT, AS RECORDED IN PLAT BOOK 20, PAGE 40, OF THE PUBLIC RECORDS OF PALM BEACH COUNTY, FLORIDA, LYING IN THE NORTHWEST QUARTER OF SECTION 5, TOWNSHIP 44 SOUTH, RANGE 43 EAST, PALM BEACH COUNTY, FLORIDA;

AUGUST 2004 SHEET 3 OF 5

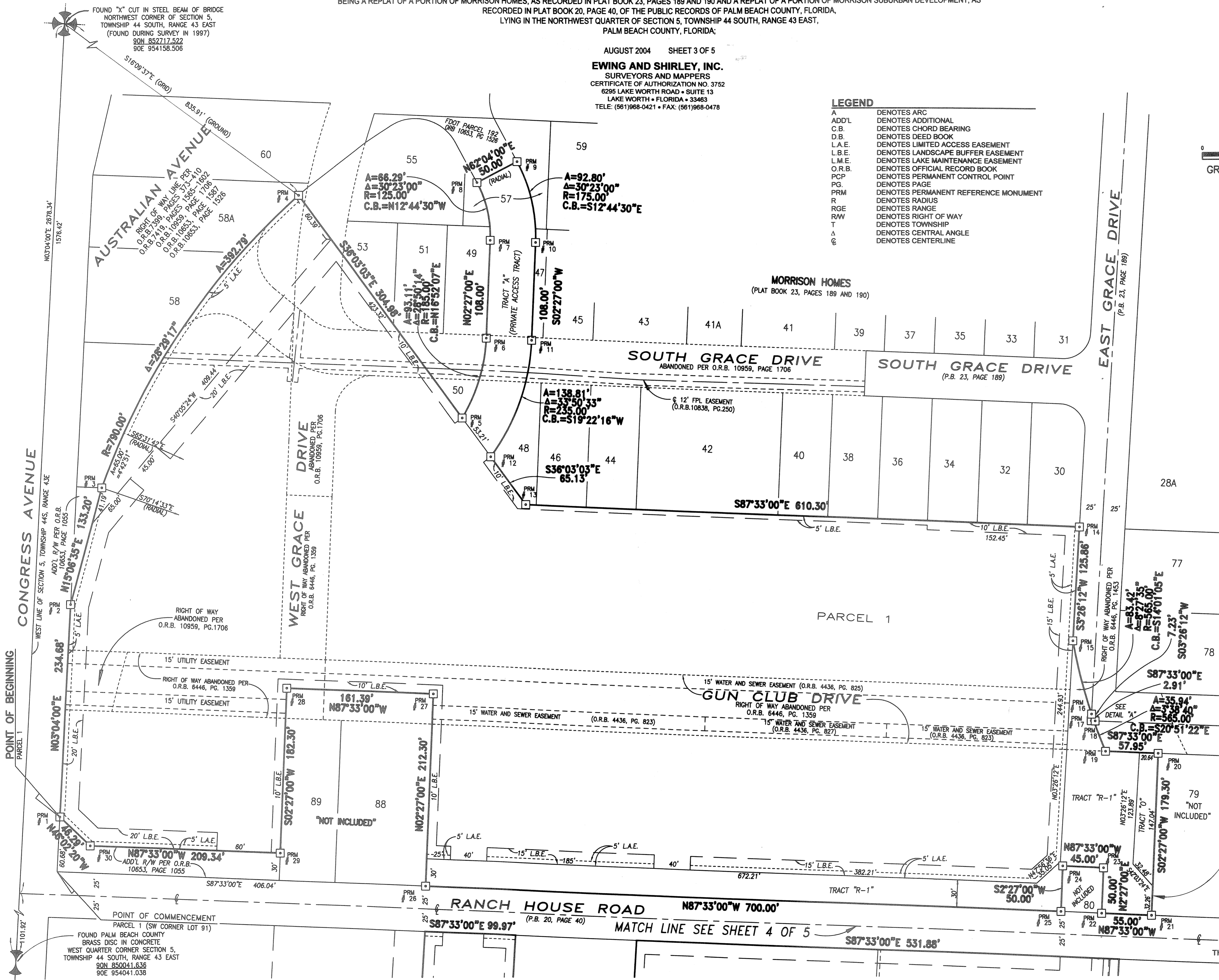
EWING AND SHIRLEY, INC.
 SURVEYORS AND MAPPERS
 CERTIFICATE OF AUTHORIZATION NO. 3752
 6295 LAKE WORTH ROAD • SUITE 13
 LAKE WORTH • FLORIDA • 33463
 TELE: (561)968-0421 • FAX: (561)968-0478

LEGEND

A	DENOTES ARC
ADD'L	DENOTES ADDITIONAL
C.B.	DENOTES CHORD BEARING
D.B.	DENOTES DEED BOOK
L.A.E.	DENOTES LIMITED ACCESS EASEMENT
L.B.E.	DENOTES LANDSCAPE BUFFER EASEMENT
L.M.E.	DENOTES LAKE MAINTENANCE EASEMENT
O.R.B.	DENOTES OFFICIAL RECORD BOOK
PCP	DENOTES PERMANENT CONTROL POINT
PG.	DENOTES PAGE
PRM	DENOTES PERMANENT REFERENCE MONUMENT
R	DENOTES RADIUS
RGE	DENOTES RANGE
RAW	DENOTES RIGHT OF WAY
T	DENOTES TOWNSHIP
∠	DENOTES CENTRAL ANGLE
Ⓢ	DENOTES CENTERLINE



REVISIONS CHS PROPERTIES, MUPD
 104 DATE: 1/11 BY: 1165 B
 105 DATE: 1/11 BY: 1165 B
 106 DATE: 1/11 BY: 1165 B
 107 DATE: 1/11 BY: 1165 B
 108 DATE: 1/11 BY: 1165 B
 109 DATE: 1/11 BY: 1165 B
 110 DATE: 1/11 BY: 1165 B
 111 DATE: 1/11 BY: 1165 B
 112 DATE: 1/11 BY: 1165 B
 113 DATE: 1/11 BY: 1165 B
 114 DATE: 1/11 BY: 1165 B
 115 DATE: 1/11 BY: 1165 B
 116 DATE: 1/11 BY: 1165 B
 117 DATE: 1/11 BY: 1165 B
 118 DATE: 1/11 BY: 1165 B
 119 DATE: 1/11 BY: 1165 B
 120 DATE: 1/11 BY: 1165 B
 121 DATE: 1/11 BY: 1165 B
 122 DATE: 1/11 BY: 1165 B
 123 DATE: 1/11 BY: 1165 B
 124 DATE: 1/11 BY: 1165 B
 125 DATE: 1/11 BY: 1165 B
 126 DATE: 1/11 BY: 1165 B
 127 DATE: 1/11 BY: 1165 B
 128 DATE: 1/11 BY: 1165 B
 129 DATE: 1/11 BY: 1165 B
 130 DATE: 1/11 BY: 1165 B



THIS INSTRUMENT WAS PREPARED BY KENT W. EWING, JR. IN THE OFFICE OF EWING AND SHIRLEY, INC. 6295 LAKE WORTH ROAD, SUITE 13 LAKE WORTH, FLORIDA 33463